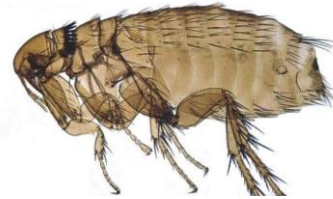




Fleas

What do Fleas look like?

Fleas are tiny, approximately 2.5 mm in length, with females slightly larger than the males. Their bodies are brown, ranging from very dark to golden in colour. They are laterally compressed (meaning they are tall and skinny) and are covered with spines and hairs that angle backwards.



These features help them weave their way effortlessly through the thick hair of their hosts. Fleas have long, spiky legs that are used for jumping to and from the animals they feed on.

How do I prepare for Flea Treatment?

Initially vacuum carpets and floorboards thoroughly along with lounge suites and chairs under cushions and beds importantly remove and dispose of vacuum bag. Ensure most items are off the floor to allow floor surfaces to be treated. You may need to vacate for 2-4hours when treatment is done.

External problems should be discussed at time of booking, Lawns should be cut if you are seeing them outside, so Exopest can treat these surfaces with the main treatment, however external treatment is usually an additional cost and necessary if extreme problem or if the pet sleeps in a outside kennel or has a favourite resting place externally.

We have no animals, why are the fleas worse now?

As long as animals are around, fleas will be attracted to them, this can be neighbouring animals accessing the subfloor of your premises. But fleas will take whatever is available and start biting humans. The fleas are hungry adults looking for their blood meal. Fortunately they do not survive well on human blood and won't be able to reproduce, so the population will die out, but it may take several weeks before this happens. However, if an animal or human re-enters the house vibration along with the atmospheric conditions like (humidity) become suitable, it may well trigger off the dormant eggs to hatch. If you have fleas it is better to kill them than to let them go dormant.

When can I clean Post treatment?

Do not vacuum or mop surfaces for 2 weeks after treatment.

Why can't I find the products in my local stores?

All the products we use are only available to professional pest control companies. Pest control products found in hardware stores are less effective and therefore more expensive in the long run.

What if I see fleas after a treatment?

Be patient! Even if your flea treatment has been done correctly, you will still see newly hatched fleas, usually for several weeks. Do not isolate flea infested areas continue to use these areas as movement will assist hatching eggs. If the flea treatments are working, fleas will hatch, contact the treated surface (carpet, flooring, soil – treated by our company, along with the pet flea free products from vets) and die within a few hours.

Flea Prevention in the Home and for your Pets

Getting Rid of Fleas isn't the easiest of things so Flea Prevention is definitely worth the effort. Adult fleas are surprisingly tough given their tiny size. They can live for up to 20 days without feeding and can easily leap off their hosts if conditions become unfavourable (such as when you're giving the dog a bath). It has been estimated that up to 80% of a house-hold infestation is made up of the flea eggs, larvae and cocoons – not just the adult fleas. It is essential to eliminate food and shelter for the larvae, preventing them from maturing into adults. Try the following tips:

- Vacuum thoroughly and regularly to remove the dirt, hair and debris that makes up the diet of larval fleas.
- Vacuum to suck up eggs, larvae and cocoons. These tough little guys can continue to develop in the vacuum bag, so be sure to dispose of it when you've finished.
- Regularly wash your pet's bedding in hot water and dry in the sun.
- Be vigilant. Groom your pet regularly and look for signs of infection such as adult fleas, flea "dirt" (the dried blood & excrement), welts, hair loss and any biting or scratching behaviour.
- Fleas can enter your home on other animals such as [rats](#) and [mice](#). Keep your lawn and garden clear of debris (where they may shelter), fix any holes or access points to your home and consider having a rodent baiting program.
- Keep your pets flea-free by using control shampoos; flea collars or consult your vet for topical treatments.
- Watch where you walk! Check your legs and clothing before entering home, Sensing vibration your body heat and breath as you pass by, fleas will leap onto your shoes, socks and skin, hitch-hiking their way into your home unnoticed.