



Bees & Wasps

What is the difference between bees & wasps?

Bees are generally a brown and yellow color, and appear a little hairy and slightly larger than European wasp which is, more a bright yellow and black very distinct markings



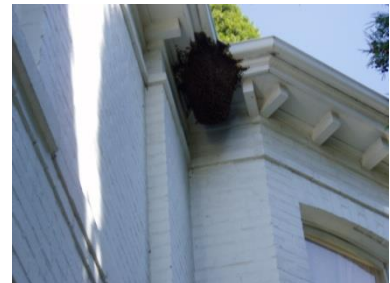
Whilst bees are very good for the eco system with pollinating plants flowers and production of honey, they often are a threat to your safety due to their ability to sting. This along with where they construct hives often means pest controllers like Exopest are required to eliminate the hive. The nesting sites are often in wall cavities around windows and door frames, within eaves and vents around your building, making it impossible to remove the hive.

European Wasps also make a papier-mâché type nest constructed from bark scrapped from trees. They will be located in above locations along with inground nests in soil around rocks sleeper's and garden beds. If bees sting you, the stinger breaks off and the bee dies, wasps however can continue to sting making them extremely dangerous if disturbed or threatened.



How do I know I have a nest?

Bees or wasps nest can be located if you observe a number of them hovering around a hole appearing to wait, then entering and exiting on regular basis. Do not attempt to disturb or treat this as the risk of attack is high.

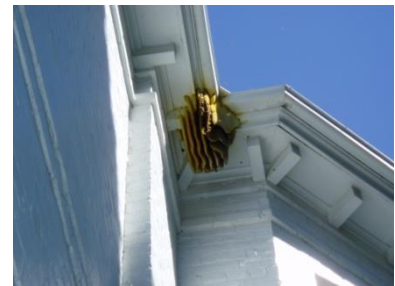


How do Exopest treat them?

Exopest trained technicians wear protective gear and inject a knockdown, apply a residual to the entry and the surrounding landing area immediately near the entry.

How long do they take to die?

Most within the nest will die immediately, a number of foraging workers will return hover around trying to get back into nest for up to 24hrs they will make contact with the pesticide and die, and the clear indication is that after 24hrs there should be none entering or hovering around that particular nest. The treatment is valid for 1 month



What about the nest?



Block up all entry points after Exopest has completed the nest treatment usually a week or two after treatment. This will help with preventing a new hive taking up residence in future years. Where possible with bee hives the client should remove honeycomb about 7-14 days after hive is dead as it will attract bees next year and ants this year. **EXOPEST DO NOT REMOVE THE NEST**

Beware

Stay away from the treated area bees or wasps may be aggressive or chemical effected and suddenly drop!

Exopest only treat nests or hives that are 3-4m from the ground anything higher would require professional lifting equipment.

Swarms

Bees can swarm!!! This is where you see a clump of bees hanging from a tree branch or clustered on a wall, they will likely move on within 24hrs. If Exopest are called out and a has moved on, we will still need to charge the same call fee regardless.



most
swarm
out



Exopest licenced serviceman will use safe registered chemicals in a manner that will ensure your safety against bee or wasp stings

What about pets?

Please keep your pets away from the immediate area of the treated nest or hive either take them inside or put in a garage for a few hours as returning bees/wasps maybe aggressive