



F.A.Q.'s about Exopest Spider Treatments.

How will a Spider treatment be carried out?

Our technician will firstly assess the property to plan the best way to control your problem. Treatment may involve dusting the roof space and subfloor; spot spraying webs around the external walls particularly verandas and beams at first floor level. Cavities around doors and windows will be treated, if no access to subfloor we will treat through external vents or plinth boards. Internal treatment usually involves spot spraying likely harbourages usually along skirting boards, with a suitable safe chemical. Every effort is made to locate and treat webbing locations directly around the building only.

Red Back Spider Treatment?

This is a Specific treatment additional or separate to a standard spider treatment. This involves treatment to, under lips of pot plants and bins, rubbish piles with materials the likes of bricks, gal iron, tins or pots are stored, within small sheds and garages particularly bottom rails and supports. Whilst fences are generally not sprayed some spot treating of fences usually the bottom rail may be necessary, subfloor vents, pool decks and other likely harbourages may also be treated.

When should the spiders start dying?

You may see spiders die soon after they contact the insecticide. Many die because of Exopest direct spraying on the day. Others may need direct contact with the treated zone or web.

What do I do if spiders appear inside after Treatment?

Spiders need to have direct contact with the chemically treated areas or webs for it to have an effect. Because spiders have long legs and their bodies are elevated it enables them to cross these barriers. You will need to spray with an aerosol those who manage to get across the treated zone or vacuum them up or put on gloves and place in a jar and remove to exterior. It is impossible to rid your whole property of all spiders' especially nomadic spiders white tails and huntsman and you may still have these invading the home.



Whitetail Spider



Huntsman Spider

What if it rains soon after treatment?

Our treatment targets spider harbourages, these are in dry areas such as roof voids, verandas, subfloors and interior, plus door and window surrounds, so wet weather will not normally affect the treatment.

When do the Webs disappear?

Webs DO NOT dissolve you will be required to brush them down, approximately 2 weeks after spraying has taken place, this enables the spiders to have contact with treated webs.

Also because of OH&S regulations and spray drift laws we cannot treat above first storey, so those spiders and webs will not be affected unless they enter roof or lower treated areas.

Windows cannot be sprayed unless client is prepared to clean them at their own expense, some small webs may still be present in the middle of window framing.

When do I call Exopest?

When excessive webs reappear within the first month after you have initially brushed down and cleaned webs in areas that were treated. Remember some areas cannot be treated and no guarantee is possible. Call and discuss circumstances, it will be at Exopest discretion whether to return and retreat problem areas.

What should I expect?

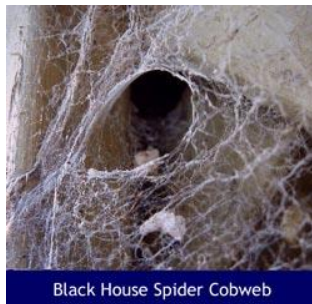
A large reduction in spiders and webbing around the immediate treatment area up to single storey, including verandas and localised harbourages within a few metres of the building.

How often should I have my home treated?

Good question. Spiders are very unpredictable. Reinfestation will depend on location, state of repair and weather conditions. Many of our clients have their home treated each year as a knock down treatment and as a management tool for spiders. Remember we cannot eradicate nature and a few spiders will always be seen around your property after extreme weather such as 30degree heat and flooding.



Redback spider



Black House Spider Cobweb



Black house spider and web