



BAGMOTH

A case bearing moth belonging to the family Psychidae and in the genus *Cebysa*. Like case moths, the psychid larvae build a web case encrusted with frass and debris and carry it around with them always.

The larvae feed only on lichens and moss so no economic problems but it probably shows a high moisture area somewhere near.

Cebysa leucotelus Walker, 1954

(one synonym: *Pitane dilecta*)

Australian Bagmoth

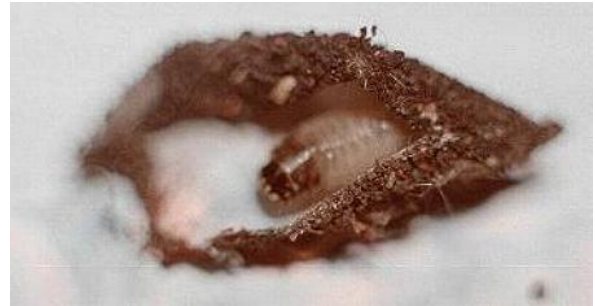
PSYCHIDAE (Specimen: courtesy of the The Australian Museum)



These caterpillars typically feed on

- Lichen which grows on tree trunks, rocks, old fences, etc. They live in a silken case which they cover in bits of lichen, making a good camouflage. They grow to a case length of about 2 cms.

Photo of cut-open case showing Caterpillar inside



The caterpillar has an off-white abdomen, but a brown head and thorax. The head and thorax are protected by a hard chitinous skin, whereas the abdomen has only a soft skin. Normally only the head and thorax are protruded from the case when the caterpillar walks and feeds

Female

(Photo: courtesy of Wendy Moore, Melbourne)

The adult female moth has black wings with yellow wingtips and patches. The black parts of the wings and the body have a metallic blue sheen. She has long legs which make up for the fact that her wings do not expand properly, so she has to walk everywhere. She also has a long ovipositor sticking out of her last abdominal segment.



The male has a similar pattern and colouring to the female, but has no iridescence. Also, he has fully developed wings,